

Digital Addressable Lighting Interface - DALI-2

DALI was originally the worldwide standard for lighting control communication. Now DALI-2 helps fill the gaps in the original standard, resulting in significant improvements in interoperability. DALI-2 adds new features, and introduces standardization of control devices including the recent addition of input devices, while maintaining backwards compatibility.

Nuvoton supports DALI device development and certification and supports a variety of DALI Parts libraries. With the help of us and Nuvoton regarding DALI libraries and certificates the development schedule can be reduced by 3 to 6 months. Depending on the IEC 62386 certificate there are two Nuvoton devices specifically for DALI applications, the NDA102 and NDA103. Those two slave devices can be controlled over a single-master device, for example the NUC029.

Provide DiiA Verified DALI Protocol

IEC 62386-102

IEC 62386-207(RGB LED modules)

IEC 62386-206(Conversion to DC 1-10V)

IEC 62386-209(Colour Type(Tc))

Hardware Support

Master MCU: NUC029 series

102+20x control gear: NDA102 series

103+30x control gear: NDA103 series

Provide Schematic, Gerber file

Features

Compiles with DALI certification

Supports DALI ProbitLab2 test verification

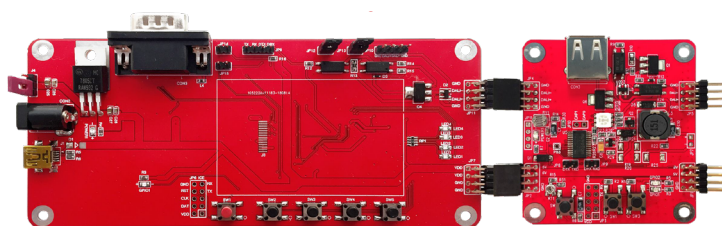
Upgrades and maintains libraries by Nuvoton

Software Support

Support Source code of Master

Support library code of Control gear

DALI test verification guide



NUC029 Series (DALI Master)

Cortex® M0 72 MHz

128 KB Flash / 16 KB RAM / 8 KB LDR0M

96-bit UID / 128-bit UCID

72 MHz PWM x 6ch

SPI / UART / I2C / USB

Operating Temp -40°C ~ 105°C

Operating Temp 2.5V~5.5V

NDA102/3 Series (IEC 20x/30x Control Device)

Cortex® M0 48 MHz

29.5KB Flash / 4KB RAM / 1.5KB SPROM

96-bit UID / 128-bit UCID

48 MHz PWM x 6ch

SPI / UART / I2C

Operating voltage 2.1V~5.5V

Operating Temp -40°C ~ 105°C