



# **S5U13781R01C100 Shield TFT Board for Arduino Due Users Manual**

Document Number: X94A-G-010-01

Status: Revision 1.0

Issue Date: 2015/07/17

## Evaluation board/kit and Development tool important notice

---

1. This evaluation board/kit or development tool is designed for use for engineering evaluation, demonstration, or development purposes only. Do not use it for other purpose. It is not intended to meet the requirement of design for finished product.
2. This evaluation board/kit or development tool is intended for use by an electronics engineer, and it is not a consumer product. The user should use these goods properly and safely. Seiko Epson does not assume any responsibility and liability of any kind of damage and/or fire caused by usage of it. The user should cease to use it when any abnormal issue occurs, even during proper and safe use.
3. The parts used for this evaluation board/kit or development tool may change without notice.

## NOTICE

---

No part of this material may be reproduced or duplicated in any form or by any means without the written permission of Seiko Epson. Seiko Epson reserves the right to make changes to this material without notice. Seiko Epson does not assume any liability of any kind arising out of any inaccuracies contained in this material or due to its application or use in any product or circuit and, further, there is no representation that this material is applicable to products requiring high level reliability, such as, medical products. Moreover, no license to any intellectual property rights is granted by implication or otherwise, and there is no representation or warranty that anything made in accordance with this material will be free from any patent or copyright infringement of a third party. This material or portions thereof may contain technology or the subject relating to strategic products under the control of the Foreign Exchange and Foreign Trade Law of Japan and may require an export license from the Ministry of Economy, Trade and Industry or other approval from another government agency.

All brands or product names mentioned herein are trademarks and/or registered trademarks of their respective companies.

©SEIKO EPSON CORPORATION 2015, All rights reserved.

---

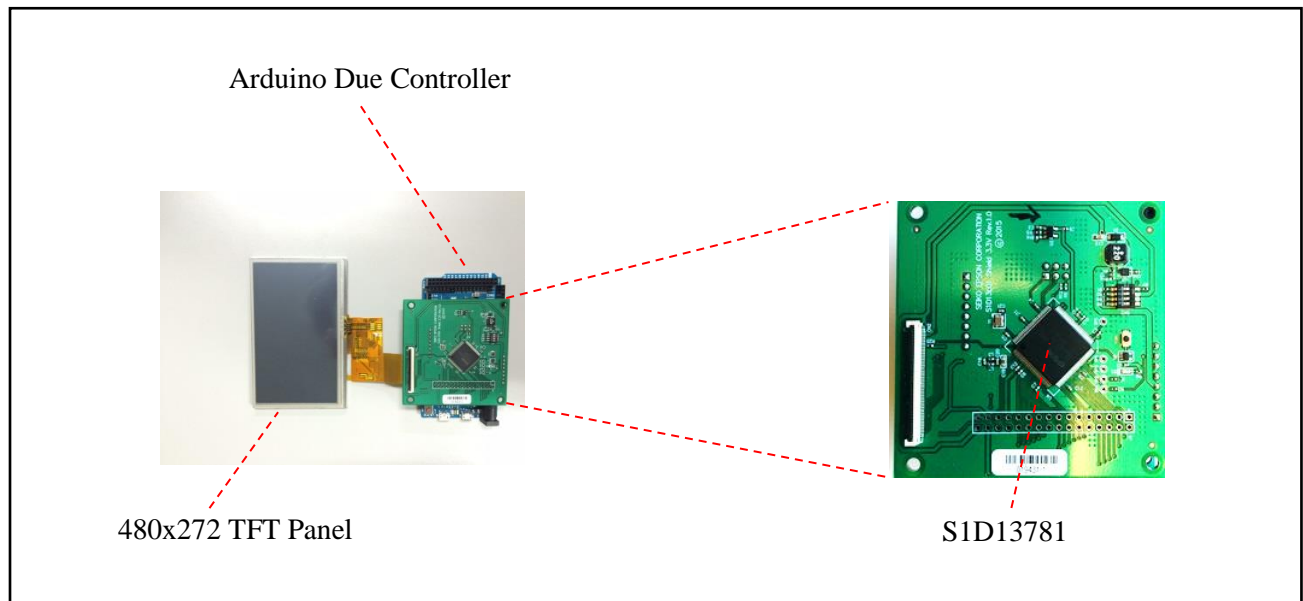
## Table of Contents

1	Introduction .....	4
2	Arduino Board Support.....	5
2.1	Connection to Arduino Due .....	5
3	LCD Displays Supported .....	6
3.1	WQVGA Displays .....	6
3.2	QVGA Displays .....	8
4	Power, Clock and Reset.....	10
4.1	Power .....	10
4.2	Clock and Reset .....	11
5	Parts List.....	12
6	Schematic Diagram.....	13
7	Change Record.....	14

# 1 Introduction

This manual describes the setup and configuration of the S1D13781 Shield TFT board, part number S5U13781R01C100, which includes an Epson S1D13781 Simple LCD Controller.

The S1D13781 Shield TFT board is used to add a WQVGA (480x272) or QVGA (320x240) LCD display (not included on the board) to an Arduino Due board.



*S1D13781 Shield TFT Board Overview*

## 2 Arduino Board Support

The S1D13781 Shield TFT board will work with the **Arduino Due board only**. It will not work with Arduino MEGA, Arduino Uno, or Arduino Leonardo boards. Although the connectors are compatible, the IO on these boards are 5V and the S1D13781 Shield TFT board only supports 3.3V IO.

### NOTE:

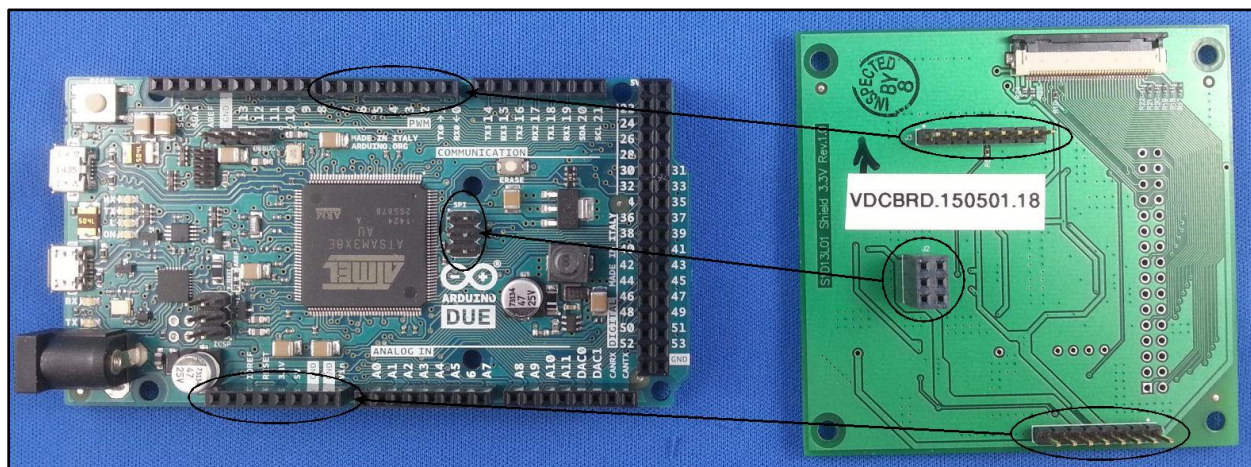
Connecting the S1D13781 Shield TFT board to a board other than the Arduino Due board may result in damage to the S1D13781 Shield board.

### 2.1 Connection to Arduino Due

The S1D13781 Shield TFT board plugs into the Arduino Due board using 3 connectors:

- J1 - which also provides power
- J2 - which has the SPI signals
- J3 - which has the slave select signal for the Arduino Due

The S1D13781 is configured to use the SPI host interface. The board will connect on the SPI bus to the Atmel MCU on the Arduino Due.



*S1D13781 Shield to Arduino Due Connections*

## 3 LCD Displays Supported

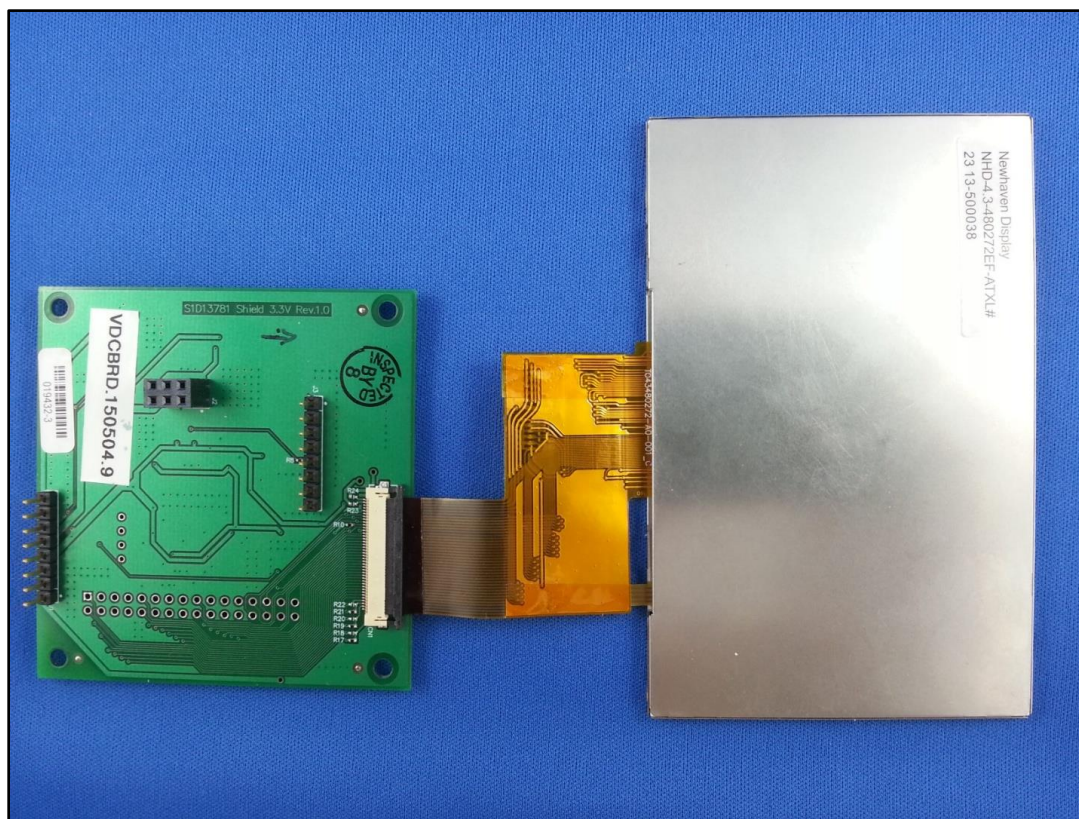
The S1D13781 Shield TFT board does not include a LCD display. The board has FPC connectors, CN1 and CN2, which allow direct connection of compatible WQVGA or QVGA LCD displays.

### 3.1 WQVGA Displays

The following lists some of the compatible WQVGA (480x272) LCD displays supported:

- Newhaven Display NHD-4.3-480272MF-ATXI#-1
- Kyocera TCG043WQLBAANN-GN00
- KOE TX11D06VM2AAA
- Tianma TM043NDH02
- Tianma TM043NBH02
- Imagin Orient IO04310006\_v2
- Hantronix HDA430-3GH-1 – this panel will require some hardware changes (moving 0 ohm resistors) on the boards – see details below
- All Shore ASI-X-48027B43Q-R-VWD/H
- AZ Displays ATM0430D5(-T)

To connect WQVGA displays, use connector CN1 which is located on the bottom of the board. The panel flex cable must have the contact pads facing toward the PCB.



*Typical WQVGA Panel Connection*



In order to connect a Hantronix HDA430-3GH-1 WQVGA display to CN1, the following modifications to the S1D13781 Shield TFT board are required. The resistors are located on the bottom of the board.

- Remove 0 ohm resistors R17, R19 and R21
- Solder 0 ohm resistors R18, R20, R22, R23 and R24



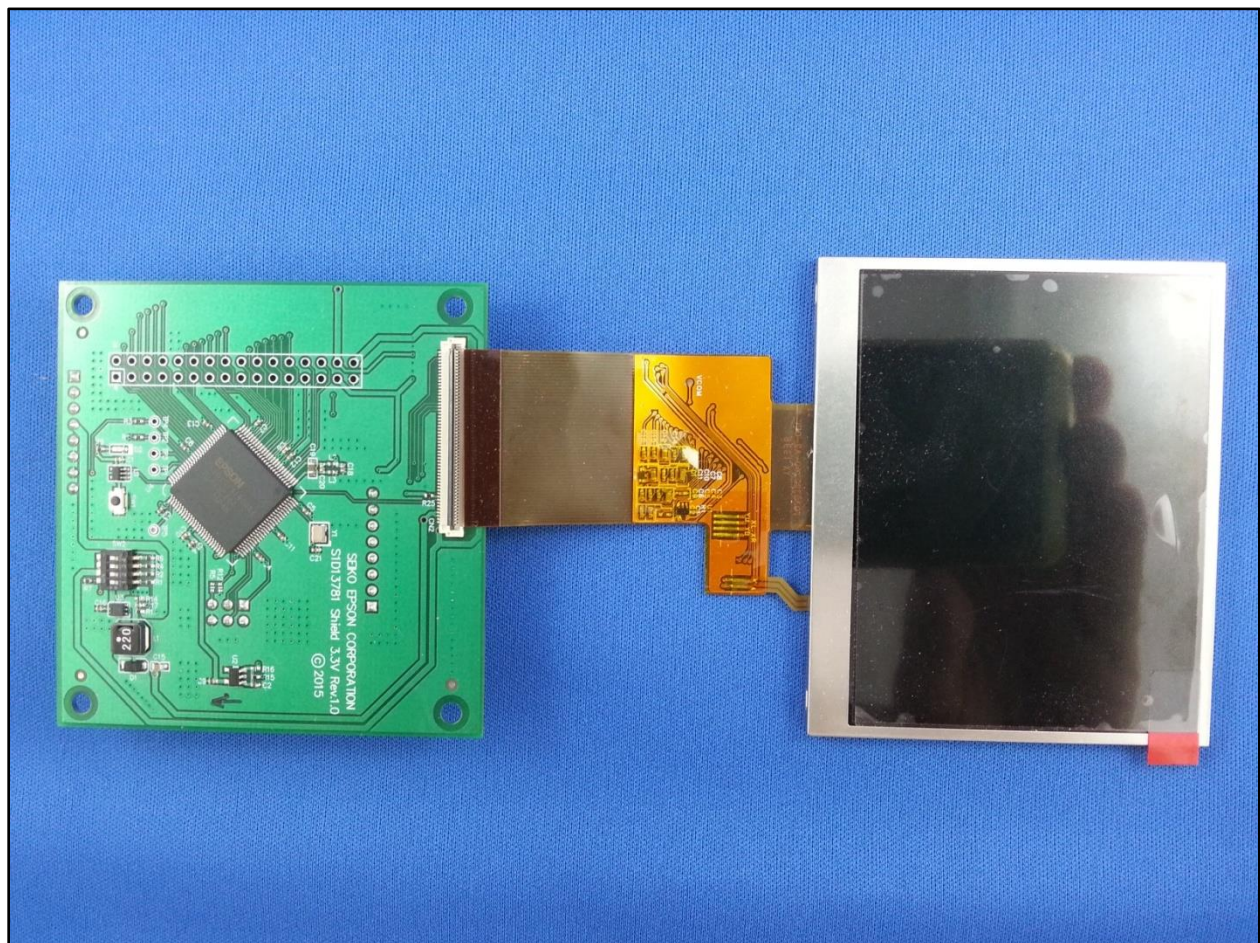
*S1D13781 Shield TFT Board Modifications for Hantronix HDA430-3GH-1 WQVGA*

## 3.2 QVGA Displays

The following lists some of the compatible QVGA (320x240) LCD displays supported:

- Newhaven Display NHD-3.5-320240MF-ATXL#-1
- Hantronix HDA351-LV
- Tianma TM035KDH03
- Evervision VGG3222425-6UFLWA
- Topway LMT035KDH03
- All Shore ASI-T-350EA3NN/D
- Powertip PH320240T-006-I-Q
- Ampire Am320240L2TMQW-TB0H
- Logic Tech LTTD320240035-L1RT
- US Micro USMP-TT035Q-01D
- Tech Toys LVC75Z779V2S
- Microtips MTF-TQ35SP741-AV

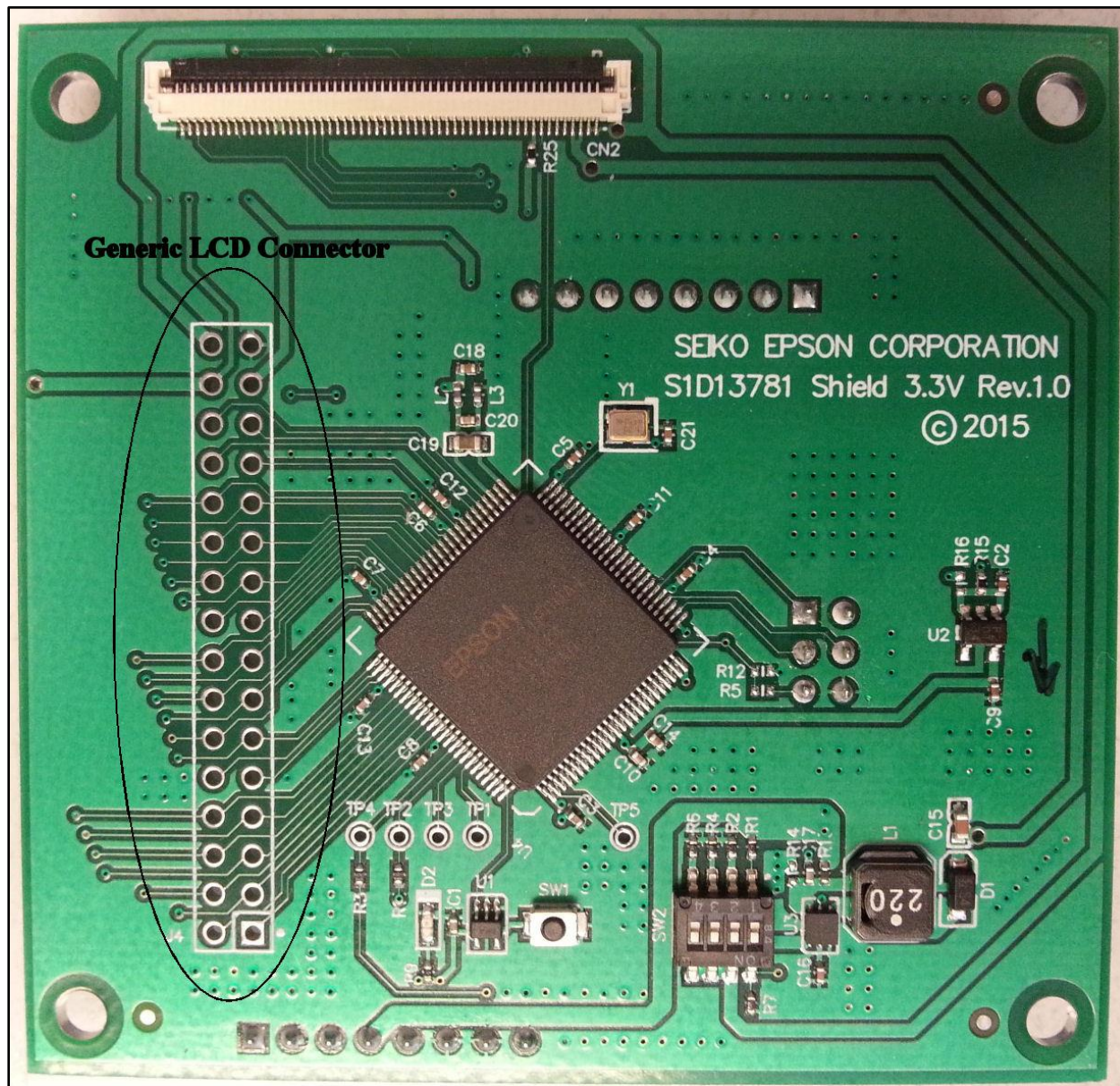
To connect QVGA displays, use connector CN2 which is located on top of the board. The panel flex cable must have the contact pads toward the PCB.



*Typical QVGA Panel Connection*



The S1D13781 Shield TFT board also has a generic LCD connector (16x2, 0.1"x0.1" header) which contains all the LCD signals, but is unpopulated on the board. If the connector is added it allows the user to design and build adapter board to support a wide range of LCD display that are not directly supported.



*Generic LCD Connector, J4 (Unpopulated)*

## 4 Power, Clock and Reset

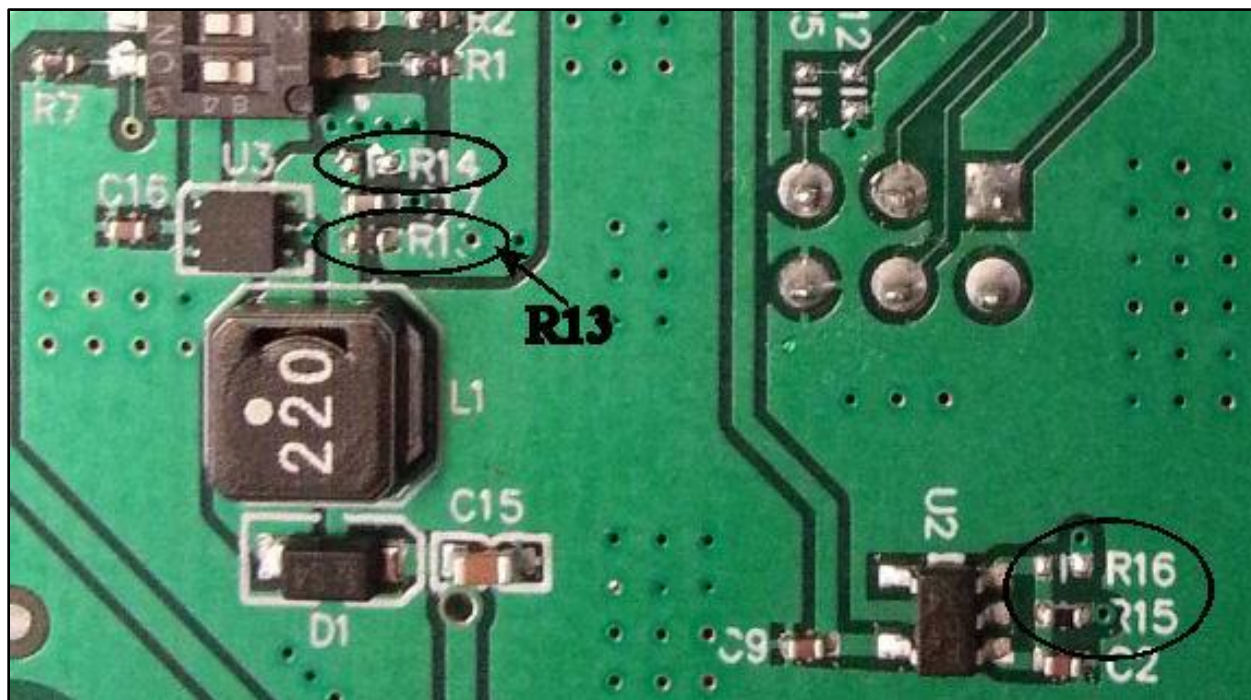
### 4.1 Power

The IO voltage supported by the S1D13781 LCD controllers mounted on the S1D13781 Shield TFT board supports 3.3V only, so the Arduino board must be able to provide 3.3V IO. The board has a green LED to indicate when 3.3V power is present.

Depending on the current required by the LCD display backlight, the current required may be from around 100mA to a maximum 850mA. If the 3.3V power is not capable of providing the required current, the board can use 5V power, in addition to 3.3V. In this case, the maximum current required on 3.3V power can be 30mA (assuming the LCD display logic power supply does not need more than 30mA) and the maximum current required on 5V power can be up to 600mA (depending on the LCD display backlight current requirement). Both 3.3V and 5V power is provided to the board on connector J1 and it will be provided by the Arduino CPU boards.

In order to use +5V power for the display backlight, some modifications are required to the S1D13781 Shield TFT board. These resistors are located on the top of the board.

- Remove 0 ohm resistor R15 and R13
- Solder 0 ohm resistors R16 and R14



*Required Modifications for +5V Power for Backlight*



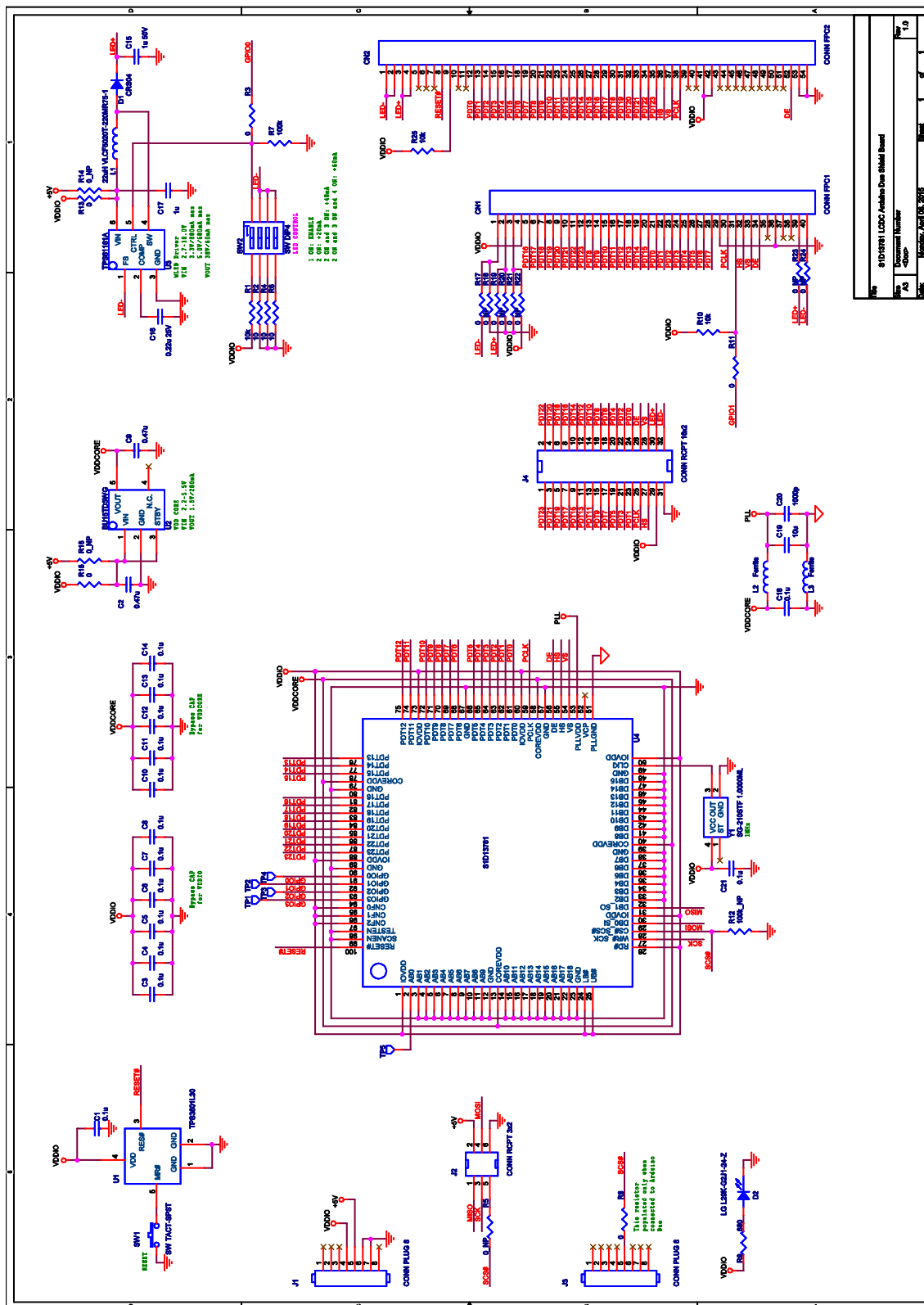


## 5 Parts List

Item	Quantity	Reference	Part	Description	Manufacturer Part No. / Comments
1	14	C1,C3,C4,C5,C6,C7,C8,C10,C11,C12,C13,C14,C18,C21	0.1u	CAP CERAMIC .10UF 16V X7R 0402	Kemet C0402C104K4RACTU or equivalent(better)
2	1	C17	1u	CAP CER 1UF 16V 10% X5R 0402	TDK C1005X5R1C105K050BC or equivalent(better)
3	2	C2,C9	0.47u	CAP CER 0.47UF 16V 10% X5R 0402	TDK C1005X5R1C474K050BC or equivalent(better)
4	1	C15	1u 50V	CAP CER 1UF 50V 10% X5R 0603	Taiyo Yuden UMK107BJ105KA-T or equivalent(better)
5	1	C16	0.22u 25V	CAP CER 0.22UF 25V 10% X5R 0402	TDK C1005X5R1E224K050BC or equivalent(better)
6	1	C19	10u	CAP CER 10UF 10V X5R 20% 0603	Taiyo Yuden LMK107BJ106MALTD or equivalent(better)
7	1	C20	1000p	CAP CER 1000PF 50V 10% C0G 0402	TDK C1005C0G1H102K050BA or equivalent(better)
8	1	D2	LG L29K-G2J1-24-Z	LED SMARTLED GREEN 570NM 0603	Osram LG L29K-G2J1-24-Z
9	1	D1	CRS04	DIODE SCHOTTKY 40V 1A SFLAT	Toshiba CRS04(TE85L,Q,M)
10	2	L2,L3	Ferrite	FERRITE CHIP 30 OHM 2200MA 0402	Murata Electronics North America BLM15PD300SN1D
11	1	L1	22uH VL5CF5020T-220MR75-1	FIXED IND 22UH 750MA 496 MOHM	TDK VL5CF5020T-220MR75-1
12	1	Y1	SG-210STF 1.0000ML	OSCILLATOR 1.000MHZ SMD	Epson SG-210STF 1.0000ML
13	1	U1	TPS3801L30	IC 2.64V SUPPLY MON SC-70-5	Texas Instruments TPS3801L30DCKR
14	1	U2	BU15TD3WG	IC REG LDO 1.5V 0.2A 5SSOP	Rohm Semiconductor BU15TD3WG-TR
15	1	U3	TPS61161A	IC LED DRIVER WHITE BCKLGT 6SON	Texas Instruments TPS61161ADRVT
16	1	U4	S1D13781	QFP15-100 .5mm pitch 14x14mm	Epson S1D13781F00A100
17	1	J2	CONN RCPT 3x2	CONN RCPT .1" 3POS DUAL	Samtec SSW-103-01-F-D or equivalent
18	2	J1,J3	CONN PLUG 8	CONN HEADER 8POS .1"	Samtec TSW-108-07-F-S or equivalent
19	1	CN1	CONN FPC1	CONN FFC BOTTOM 40POS 0.50MM R/A	Molex 0541324062
20	1	CN2	CONN FPC2	CONN FFC BOTTOM 54POS 0.50MM R/A	Molex 0512965494
21	1	J4	CONN RCPT 16x2	CONN RCPT .1" 16POS DUAL	Samtec SSW-116-01-F-D or equivalent
22	1	SW1	SW TACT-SPST	SWITCH TACTILE SPST-NO 0.05A 12V	Omron B3U-1000P
23	1	SW2	SW DIP4	SWITCH DIP VERT 4POS SMT 24V	Omron A6H-4102-P
24	5	TP1,TP2,TP3,TP4,TP5	TP SIP	PCB .025" hole .045" pad	Thru-hole Test Point, not part
25	8	R3,R8,R11,R13,R15,R17,R19,R21	0	RES 0.0 OHM 0402 SMD	
26	8	R5,R14,R16,R18,R20,R22,R23,R24	0_NP	RES 0.0 OHM 0402 SMD	/ Do not buy, do not populate
27	3	R2,R4,R6	10	RES 10.0 OHM 1/16W 1% 0402 SMD	
28	1	R9	680	RES 680 OHM 1/16W 1% 0402 SMD	
29	3	R1,R10,R25	10k	RES 10.0K OHM 1/16W 1% 0402 SMD	
30	1	R7	100k	RES 100K OHM 1/16W 1% 0402 SMD	
31	1	R12	100k_NP	RES 100K OHM 1/16W 1% 0402 SMD	/ Do not buy, do not populate



## 6 Schematic Diagram



## 7 Change Record

X94A-G-010-01      Revision 1.0 - Issued: July 17, 2015

- Release document as rev 1.0

### AMERICA

---

#### EPSON ELECTRONICS AMERICA, INC.

214 Devcon Drive,  
San Jose, CA 95112, USA  
Phone: +1-800-228-3964 FAX: +1-408-922-0238

### EUROPE

---

#### EPSON EUROPE ELECTRONICS GmbH

Riesstrasse 15, 80992 Munich,  
GERMANY  
Phone: +49-89-14005-0 FAX: +49-89-14005-110

### ASIA

---

#### EPSON (CHINA) CO., LTD.

7F, Jinbao Bldg., No.89 Jinbao St.,  
Dongcheng District,  
Beijing 100005, CHINA  
Phone: +86-10-8522-1199 FAX: +86-10-8522-1125

#### SHANGHAI BRANCH

7F, Block B, Hi-Tech Bldg., 900 Yishan Road,  
Shanghai 200233, CHINA  
Phone: +86-21-5423-5577 FAX: +86-21-5423-4677

#### SHENZHEN BRANCH

12F, Dawning Mansion, Keji South 12th Road,  
Hi-Tech Park, Shenzhen 518057, CHINA  
Phone: +86-755-2699-3828 FAX: +86-755-2699-3838

#### EPSON HONG KONG LTD.

Unit 715-723, 7/F Trade Square, 681 Cheung Sha Wan Road,  
Kowloon, Hong Kong.  
Phone: +852-2585-4600 FAX: +852-2827-4346

#### EPSON TAIWAN TECHNOLOGY & TRADING LTD.

14F, No. 7, Song Ren Road,  
Taipei 110, TAIWAN  
Phone: +886-2-8786-6688 FAX: +886-2-8786-6660

#### EPSON SINGAPORE PTE., LTD.

1 HarbourFront Place,  
#03-02 HarbourFront Tower One, Singapore 098633  
Phone: +65-6586-5500 FAX: +65-6271-3182

#### SEIKO EPSON CORP. KOREA OFFICE

5F, KLI 63 Bldg., 60 Yoido-dong,  
Youngdeungpo-Ku, Seoul 150-763, KOREA  
Phone: +82-2-784-6027 FAX: +82-2-767-3677

---

#### SEIKO EPSON CORP. MICRODEVICES OPERATIONS DIVISION

#### IC Sales & Marketing Department

421-8, Hino, Hino-shi, Tokyo 191-8501, JAPAN  
Phone: +81-42-587-5814 FAX: +81-42-587-5117