



Embedded World Demos

- **Wireless Power Charger** using PAC5220WP Power Application Controller™
- **BLDC Motor Platform** with PAC5220 for Sensored, Sensorless, FOC Control
- **High-voltage ACIM, PMSM Motor Platform** with PAC5250 for FOC Control
- **Embedded All-in-1 PMICs** ACT8865, ACT8945A for Atmel SAMA5, SAM9 eMPUs
- Power System-on-Chip solutions for Power Banks and Bluetooth Speakers
- And more

Embedded World Partners



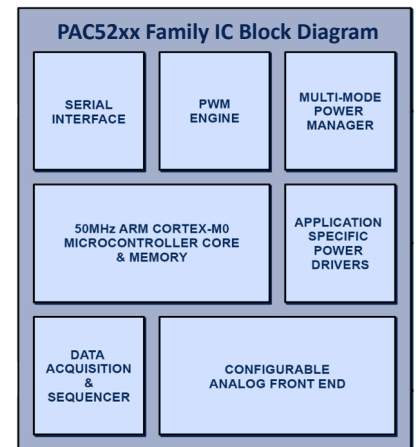
About Active-Semi

- Headquartered in Dallas, Texas, USA
- Founded in 2004
- 1 Billion ICs shipped by May 2012
- Operations in the US, Europe, China, Taiwan, Hong Kong, Japan and S Korea
- www.active-semi.com/about/leadership

Active-Semi International, Inc.
One Allen Center
700 Central Expressway South, Ste. 330
Allen, TX 75013
USA

ACTIVE-SEMI POWER APPLICATION CONTROLLER (PAC)™ FAMILY

Active-Semi's industry leading **Power Application Controller (PAC)™** family of ICs offers unprecedented flexibility and scalability in the systems design of power control applications such as **wireless power, motor drives, power inverters, LED lighting, high-voltage system controllers**. PAC™ enables single-IC based system solutions in the target power applications.



With an embedded **ARM Cortex MCU** integrated with highly sophisticated, yet configurable analog and power peripherals, PAC™ Family offers highly integrated ICs ideal for developing power applications with input voltage up to 72V DC and universal AC voltages, and output power ranging from **few watts to a few kilo watts**. PAC™ family also features **52V/72V/600V gate drivers** for up to **4 half-H bridges** driving MOSFETs or IGBTs, **Multimode Power Manager** for AC-DC and DC-DC conversion, LDOs, **Configurable AFE**, High-precision DACs, ADC, single-ended & differential PGAs, PWM Engines, SPI, I2C, UART and other peripherals.

Visit us at Embedded World in Nuremberg, Hall 1-420

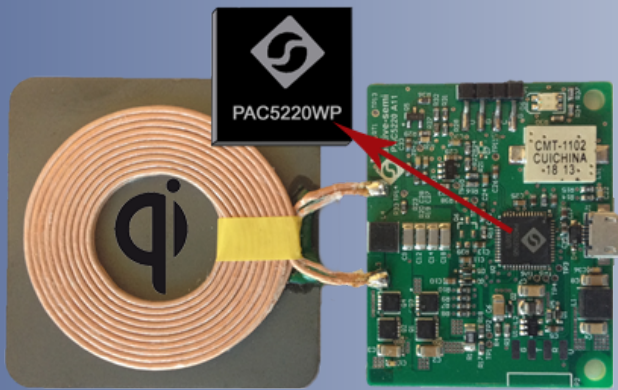
ACTIVE-SEMI ANALOG POWER PORTFOLIO



Active-Semi also offers a wide range of specialized and catalog analog power ICs including,

- * Power management ICs (PMICs/PMUs) for Atmel SAMA5 and SAM9 eMPUs
- * PMICs for popular single and multicore processors
- * Single-IC power management solutions for Power Bank products, Bluetooth speakers
- * High-power and low-power DC-DC power converter products
- * ActivePSR™ and ActiveQR™ line of primary side and secondary side regulator ICs

Embedded World 2014 Live Demos @ Hall 1-420 with Active-Semi's Power Application Controller™



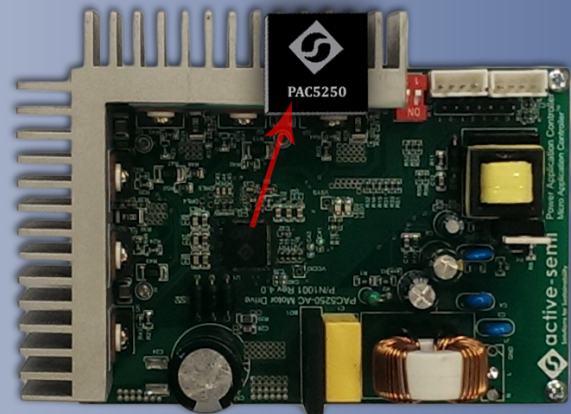
PAC5220WP IC and Wireless Power Solution Kit in Production. Order Now

Qi-Certified Wireless Power Solutions

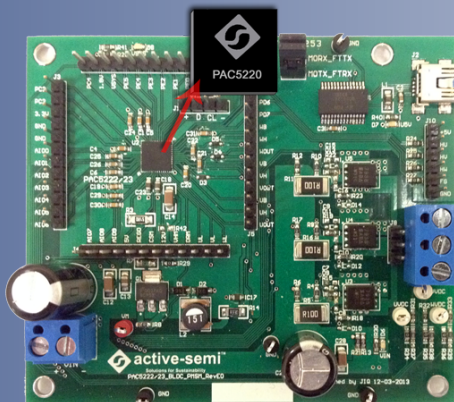
- * Latest Qi version 1.1.2 Certification
- * Industry's highest efficiency of 75%
- * Industry's lowest standby power
- * Industry's lowest BOM cost solution
- * Turnkey solution with preloaded firmware
- * Customizable features for LEDs, Buzzer
- * PAC5220WP IC based scalable platform beyond WPC for multi-coil, multi-mode, medium & high power wireless chargers up to 150W

High-Voltage ACIM/PMSM FOC Motor Solutions

- * PAC5250 Single-IC based FOC Motor solution
- * Integrated ARM Cortex MCU, SDK for development
- * Integrated 600V gate drivers for 3 Half H-bridges
- * Integrated Multi-mode Power Manager for AC-DC, DC-DC conversion, 4 LDOs for system power
- * Integrated Configurable AFE with single & diff PGAs, comparators, precision DACs, ADC
- * FOC Firmware, Speed estimator, Software GUI for motor parameter tuning and development



PAC5250 IC and HV FOC Motor Solution Kit in Production. Order Now



PAC5220 IC and BLDC Motor Solution Kit in Production. Order Now

BLDC Motor Control Solutions

- * PAC5220 Single-IC based BLDC Motor solution
- * Integrated ARM Cortex MCU, SDK for development
- * Integrated 52V gate drivers for 3 Half H-bridges
- * Integrated Multi-mode Power Manager for AC-DC, DC-DC conversion, 4 LDOs for system power
- * Integrated Configurable AFE with single & diff PGAs, comparators, precision DACs, ADC
- * Firmware for Sensored, Back EMF Sensorless and FOC
- * Software GUI for motor tuning and control

**For more Active-Semi IC Products, Evaluation Kits, Application Solutions
visit www.active-semi.com**

Order your samples now